



Exposition Light Rail Transit Project



**Project Status Update Meeting
West End Corridor – Segment C
Culver City Senior Center
November 18, 2010**

Phase 1 from Downtown Los Angeles to Culver City:

- 8.6 mile corridor
- 12 Stations, 2 Shared with Blue Line
- 1,500 Spaces at 3 Park and Ride Lots
- Estimated Daily Riders in 2020: 27,000
- Estimated Travel Time: 30 minutes
- Estimated Cost: \$899 million
- Construction Completion: 80%
- Partial Opening: 2011
- Culver City Opening: 2012



Expo Line Transit Project

Phase 1 Alignment Map



Expo Line Transit Project

Urban Design Elements



Typical Aerial Station & Structure

Typical Station Design



Phase 1 Expo Line Transit Project

La Brea Aerial Station



Phase 1 Expo Line Transit Project

La Cienega Aerial Station



Daytime Construction Activities in Segment C

Construction of aerial stations at La Brea Avenue and La Cienega Boulevard, including installation of elevators and station furnishings

Construction of La Cienega parking structure

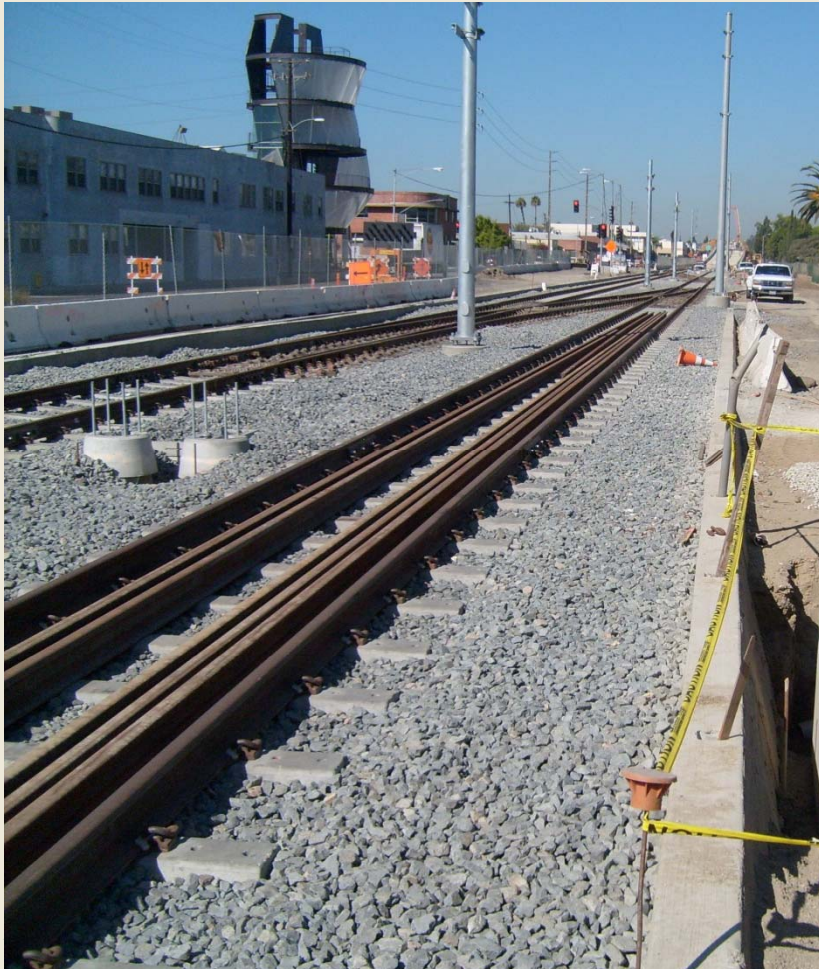
Installation of traffic signal foundations and conduit

Continuing civil and street improvements on National Boulevard from Jefferson Boulevard to Schaefer Street



Looking east from the La Brea Aerial Station (t) and construction of La Cienega Parking Structure (b)

Daytime Construction Activities in Segment C (cont.)



Installed track near Fay Avenue in Culver City

Continuing installation of surface track from Ballona Creek to Wesley Street

Continuing sound wall construction in Culver City, including excavating, drilling for CIDH piles, forming rebar, and installing the sound wall posts and pre-cast panels

Begin street reconstruction and improvements at the cul-de-sacs on Helms Avenue and Wesley Street

Begin installation of right-of-way fencing and landscape irrigation

Night Work in Segment C

Various civil improvements are anticipated to take place through March 2011 at the intersections of :

- La Brea Avenue / Jefferson Boulevard
- La Cienega Boulevard / Jefferson Boulevard
- Jefferson Boulevard / National Boulevard

Nighttime lane takes or closures at these intersections may be necessary to accommodate the work. Construction notices will be issued to the public prior to the start of any night work activities.

**Nighttime work hours,
Monday through Friday:**

9:00 p.m. - 5:00 a.m.

*Storm drain work at
La Brea Ave / Jefferson Blvd*



Street Reconstruction and Restoration

Street reconstruction and restoration work at major intersections is expected to begin in January 2011. Demolition work, curb and gutter installation, street repaving and final civil improvements will be completed. Work will require full intersection closures that will last several days, depending on the extent of the work.

Intersections scheduled for restoration:

- La Brea Avenue/Exposition Blvd
- La Cienega Boulevard/Exposition Blvd
- Jefferson Boulevard / National Boulevard



Reconstruction/restoration work at Western Ave

Venice/Robertson Aerial Station and Structure

In March 2010, Balfour Beatty Infrastructure, Inc. was awarded the contract to construct the Venice/Robertson aerial station and structure.

Construction began this summer and the majority of concrete placement is complete.

Anticipated daytime construction activities include:

- Removal of false work over Washington and National Boulevards starting in early December
- Installation of underground electrical duct bank
- Commencement of work for the aerial station in January 2011



False work over National Boulevard

Venice/Robertson Aerial Station and Structure (cont.)



Concrete placement at Venice/Robertson Aerial Station

Occasional temporary lane closures will be implemented for remaining concrete pours through December 2010

Work may require daytime and weekend closures of Washington Boulevard, from National Boulevard to Landmark Street, through February 2011

View of Venice/Robertson Aerial Structure from Wesley Street



Types of Mitigation Measures

- Watering trucks are used regularly throughout the alignment
- If noise produced by construction activity exceeds allowable limits, sound blankets and other appropriate measures are implemented
- Advanced notification of traffic detours and delays will be provided
- Street sweepers are used regularly to clear debris from paved streets in the construction zone



Watering near La Cienega Blvd

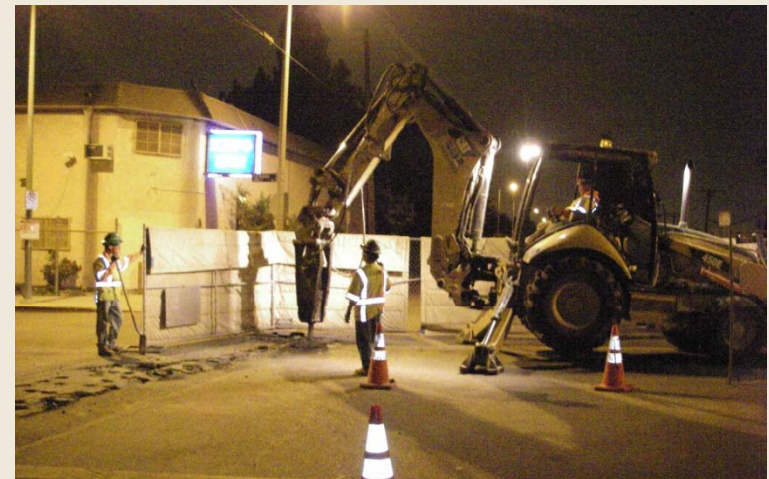


Spraying of soil binder at Jefferson Blvd

Mitigation Measures for Night Work

- On-site noise monitoring is conducted to ensure compliance during noise-generating construction activities.
- Back-up alarms are disabled where practical, and flaggers are used instead to safely direct drivers of trucks and other heavy equipment.
- Sound blankets are installed wherever feasible to buffer construction noise.
- Inspectors are on the site to monitor compliance

*Night work on
sewer line at
Farmdale Avenue*





Community art mural project at the Expo construction field office

- A 24-hour hotline phone number has been set up for all construction inquiries and emergencies:

(213) 922-EXPO (3976)

- Team will respond to all construction inquiries as soon as possible and no later than 48 hours. All emergencies will be addressed immediately.
- Noise complaints will be addressed immediately.
- Construction notices are distributed throughout adjacent communities prior to the start of new construction activities.
- Regular project status meetings, elected briefings and stakeholder updates will continue to be held throughout construction and startup of the line.

Expo Line Transit Project

Reaching Stakeholders Where They Are

Expo Light Rail Line

431 People Like This

Expo Phase 1 Construction Progress

May 21 at 5:52pm · Comment · Like · Share

60 people like this.

Write a comment...



E-blast



Help Make It Happen!

Today the Expo Authority Board will consider approval of the Expo Phase 2 project to Santa Monica.

<http://www.buildexpo.org/>

Tired of sitting?
Taking too long?
Want to make a difference?

Expo

SHOW YOUR SUPPORT

JOIN OUR LIST

EXPO LIGHT RAIL LINE

NEWS

Website

<http://bit.ly/ExpoFacebook>

<http://twitter.com/ExpoLightRail>

ExpoLightRail

230 followers

Phase 1: Downtown LA to Culver City Phase 2: Culver City to Santa Monica

240 following

230 followers listed

204 Tweets

Following

ExpoLightRail

metro's source readers give their thoughts on what Expo Line's new colors should be <http://bit.ly/bROK78> #metrolosangeles

1:45 PM May 14th via web

For more information regarding this project, please contact:

Gabriela G. Collins

Expo Community Relations Manager

213-243-5535 or gcollins@exporail.net

Adrienne Sasser-Gardner

FFP Community Relations Manager

310-601-1055 or adrienne.gardner@parsons.com

